

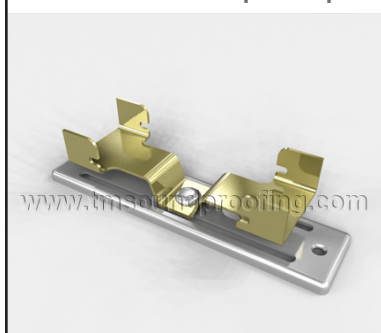


Trademark
SOUNDPROOFING

Standard / Commercial Whisper Clips

Technical Data Sheet

Standard Whisper Clip



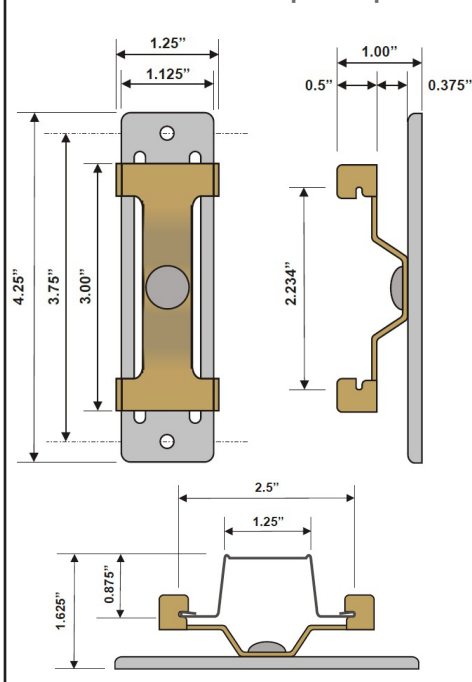
Commercial Whisper Clip



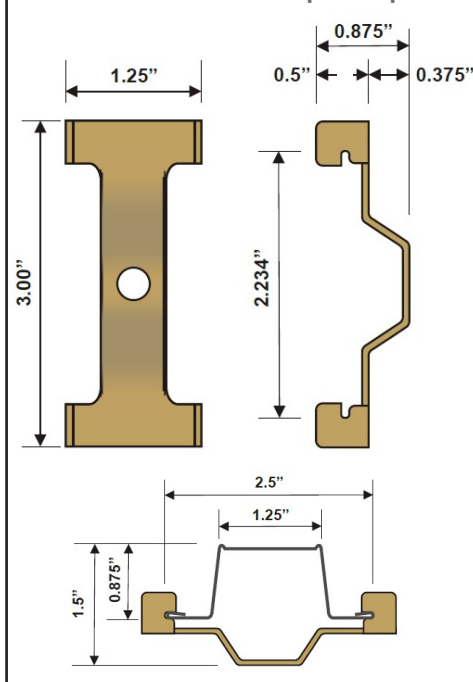
Product Specifications:

Width: 1.25 inch
Height, Standard: 4.25" **Commercial:** 3.00"
Depth, Standard: 1.00" **Commercial:** .875"
Weight: .025 Lbs.
Max Spacing: 48" on center
Recommended Load: 36 Lbs. - 3 drywall layers
Max Safe Load: 46 Lbs. - 4 drywall layers
Fail Load: 300 Lbs. - 27 drywall layers

Standard Whisper Clip



Commercial Whisper Clip



Benefits of Whisper Clips:

- Standard Whisper Clips can achieve an astounding STC of 56 (Commercial Clip has STC of 55) with just one layer of drywall (see below for test results)
- Whisper Clips were designed with maximum low frequency sound isolation in mind, eliminating the bass sounds most commonly found with home entertainment and theater systems
- Whisper clips cannot be short circuited, unlike resilient channels
- Whisper clips does not require special drywall
- No need for double stud, staggered stud, or double wall assemblies
- Whisper Clips work better and last longer.

The Whisper Clip is the Highest Rated, Best Priced and Easiest to Install Clip for Decoupling of Walls and Ceilings

Whisper Clips and channels are used in the process of decoupling walls and/or ceilings from the joists, creating what is called a floating wall or ceiling. Decoupling the wall or ceiling helps prevent vibrations from traveling from one side of the structure to the other.

This break in the path greatly reduces the amount of noise that travels from one side to the other in two ways. Firstly, there is no direct connection for sound to travel via the joists as the wall/ceiling is disconnected. Secondly, the wall and ceiling are given resiliency (flexibility), thus greatly reducing vibration (similar to shock springs on a car).

www.tmsoundproofing.com

Phone: 845-388-1200 | Fax: 845-388-1388

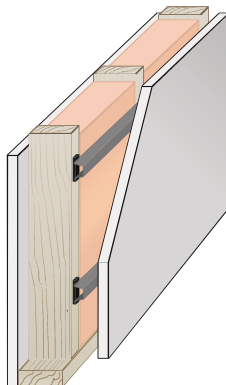
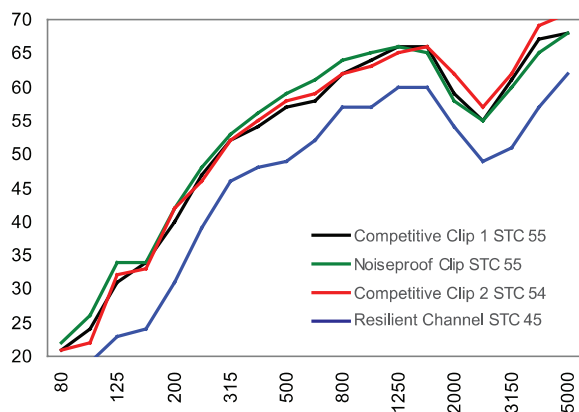


Trademark
SOUNDPROOFING

Standard / Commercial Whisper Clips

Technical Data Sheet

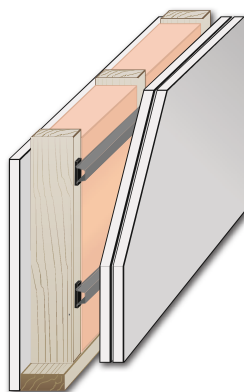
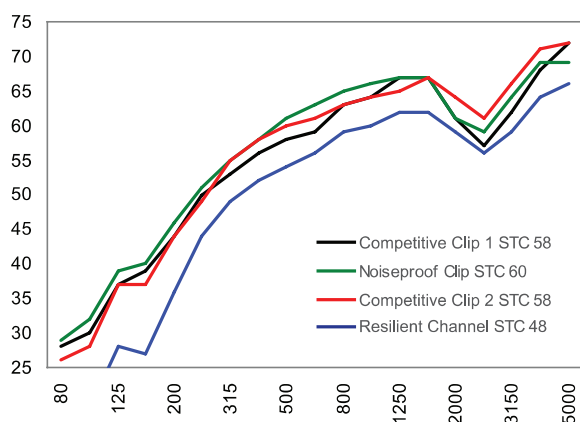
Whisper Clips with a Single Layer of Drywall



Whisper Clips have a higher STC Rating than competitive clips. As indicated by the graph, Whisper Clips are designed to perform exceptionally well at low frequencies.

Type	Test Number	STC
Green Glue Standard Whisper Clip		56
Green Glue Commercial Whisper Clip	OL 08 0708	55
Competitive Clip 1	OL 08 0345	55
Competitive Clip 2	OL 08 0501	54
Resilient Channel	OL 08 0336	45

Whisper Clips with a Double Layer of Drywall on Clip Side



Adding mass to a wall by installing a second layer is always beneficial. Adding a second layer of drywall to Whisper Clips improves the transmission loss of the structure more than our competition clips. Again, the Whisper Clip continues to excel at lower frequencies.

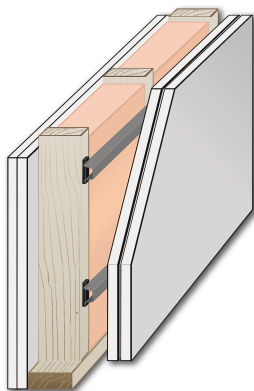
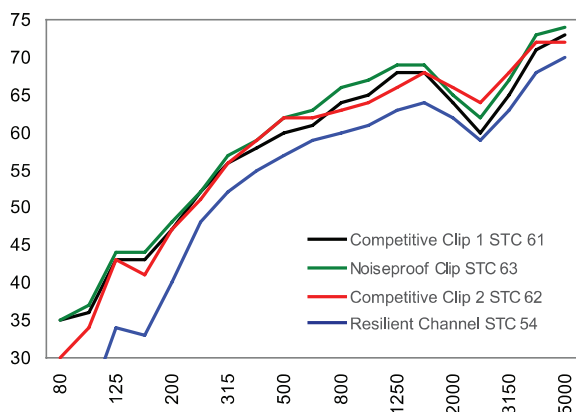
Type	Test Number	STC
Green Glue Standard Whisper Clip		61
Green Glue Commercial Whisper Clip	OL 08 0712	60
Competitive Clip 1	OL 08 0346	58
Competitive Clip 2	OL 08 0502	58
Resilient Channel	OL 08 0337	48

www.tmsoundproofing.com

Phone: 845-388-1200 | Fax: 845-388-1388



Whisper Clips with a Double Layer on Both Sides



A double layer of drywall on each side yields the best results without using additional soundproofing products, such as Green Glue Noiseproofing Compound to improve transmission loss.

Type	Test Number	STC
Green Glue Standard Whisper Clip		63
Green Glue Commercial Whisper Clip	OL 08 0708	63
Competitive Clip 1	OL 08 0345	61
Competitive Clip 2	OL 08 0501	62
Resilient Channel	OL 08 0338	54

Secondary Frames Comparison

No secondary frame	/	STC 34	STC 36	STC 38
Resilient Channels		STC 45	STC 48	STC 54
RSIC-V		STC 53	STC 58	STC 61
RSIC-1		STC 55	STC 58	STC 61
Model IsoMax		STC 54	STC 58	STC 62
Standard Whisper Clip		STC 56	STC 61	STC 63
Commercial Whisper Clip		STC 55	STC 60	STC 63

Primary frame:
2x4 Wood Frame at 16" OC

Cavity insulation:
R19 Fiberglass batts

Sheeting:
5/8" Drywall Type X

All clips are used in conjunction with 25 gauge hat channels