

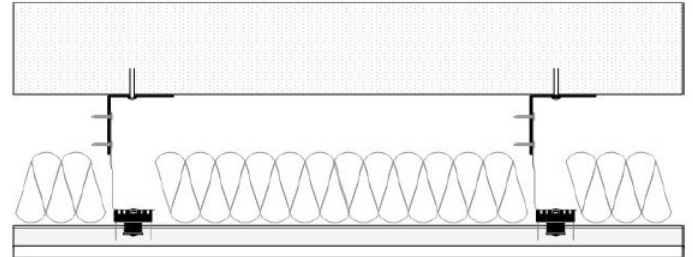
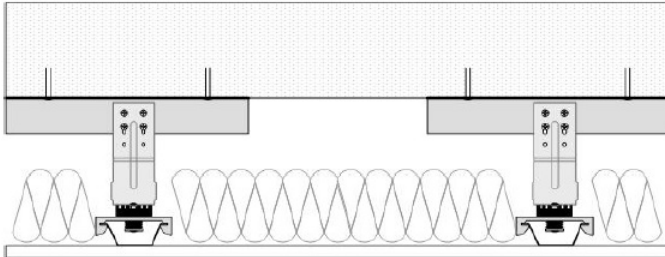


Trademark
SOUNDPROOFING

RSIC-EXT04 Series

Sample Product Testing

Drop Ceiling Under Concrete



CONSTRUCTION

- 8" pt Slab - No Finish
- 1.5" x 1.5" x 6" L Metal Bracket Spaced at 24" x 48" OC
- RSIC-EXT04 Clip Fastened to L Metal Bracket
- 6" Glass Fiber Insulation
- 7/8" Drywall Furring Channel @ 24" OC
- 1 Layer 5/8" Gypsum Board

Non Combustible - IIC: 52 - STC: 73