

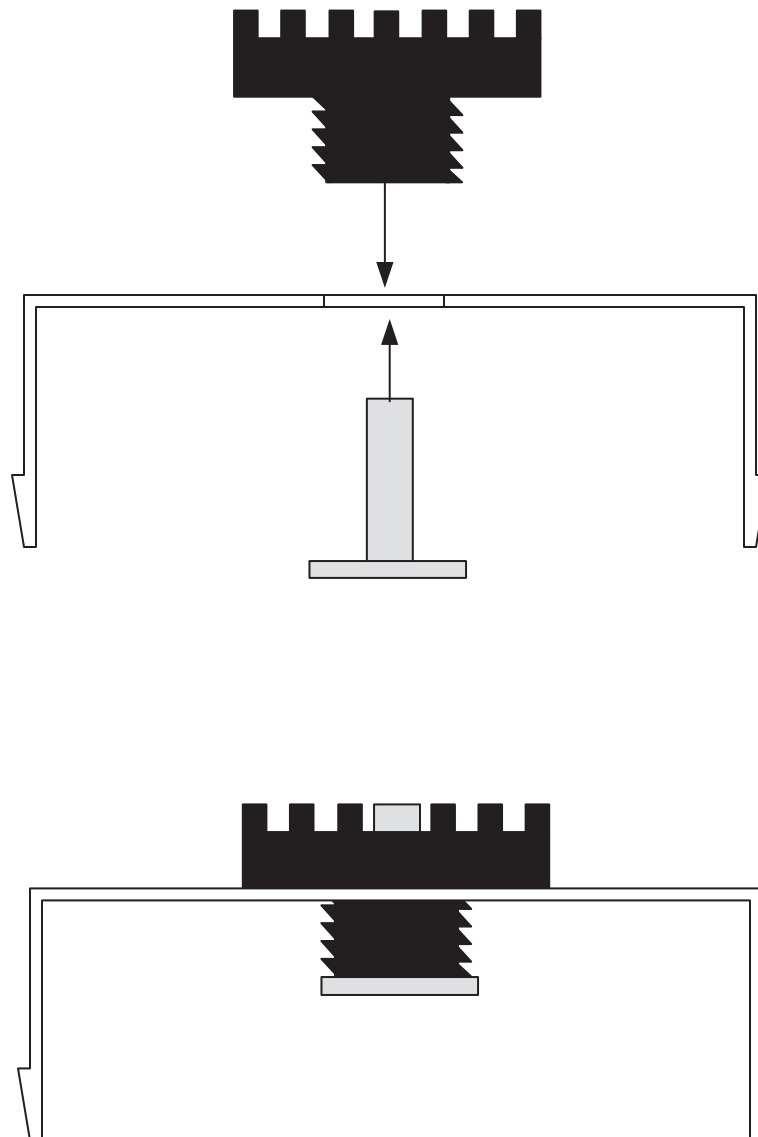


Trademark
SOUNDPROOFING

Installation Guide

RSIC-AMI Acoustical Mullion Isolator

Punch or drill $\frac{3}{4}$ " hole in mullion at 24" intervals. (mullion supplied by others)
Press or screw rubber isolator through $\frac{3}{4}$ " holes.
Press the metal ferrule supplied with the RSIC-AMI into the rubber isolator.





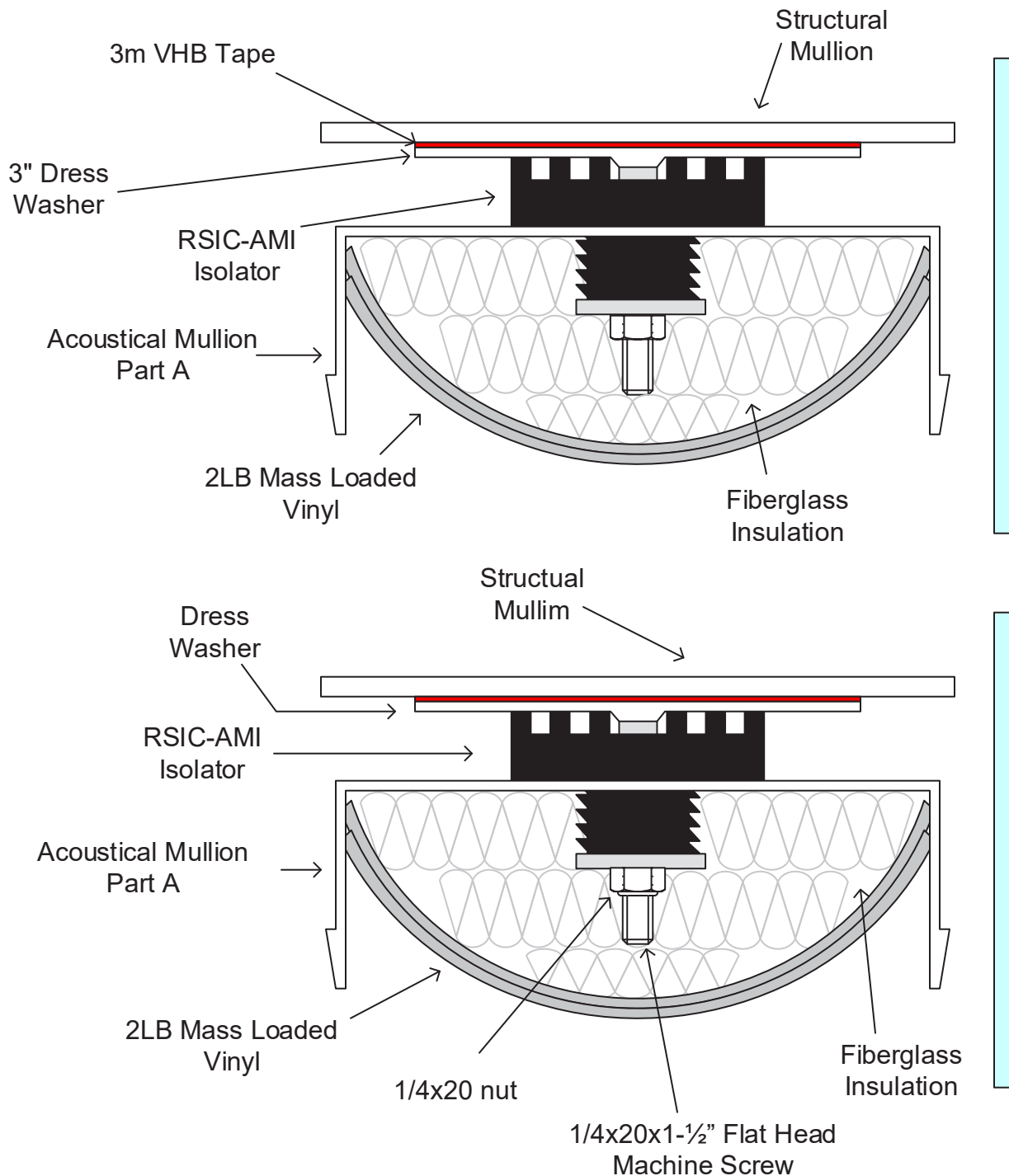
Trademark
SOUNDPROOFING

Installation Guide

RSIC-AMI Acoustical Mullion Isolator

Install the RSIC-AMI Mullion section to the structural mullion.

Use Elevator bolt fastened to mullion using two sided VHB adhesive tape rated to support the total load of the Acoustical mullion, 1/4x20 threads and lock nut to secure the RSIC-AMI to the structural mullion. (fasteners supplied by others)





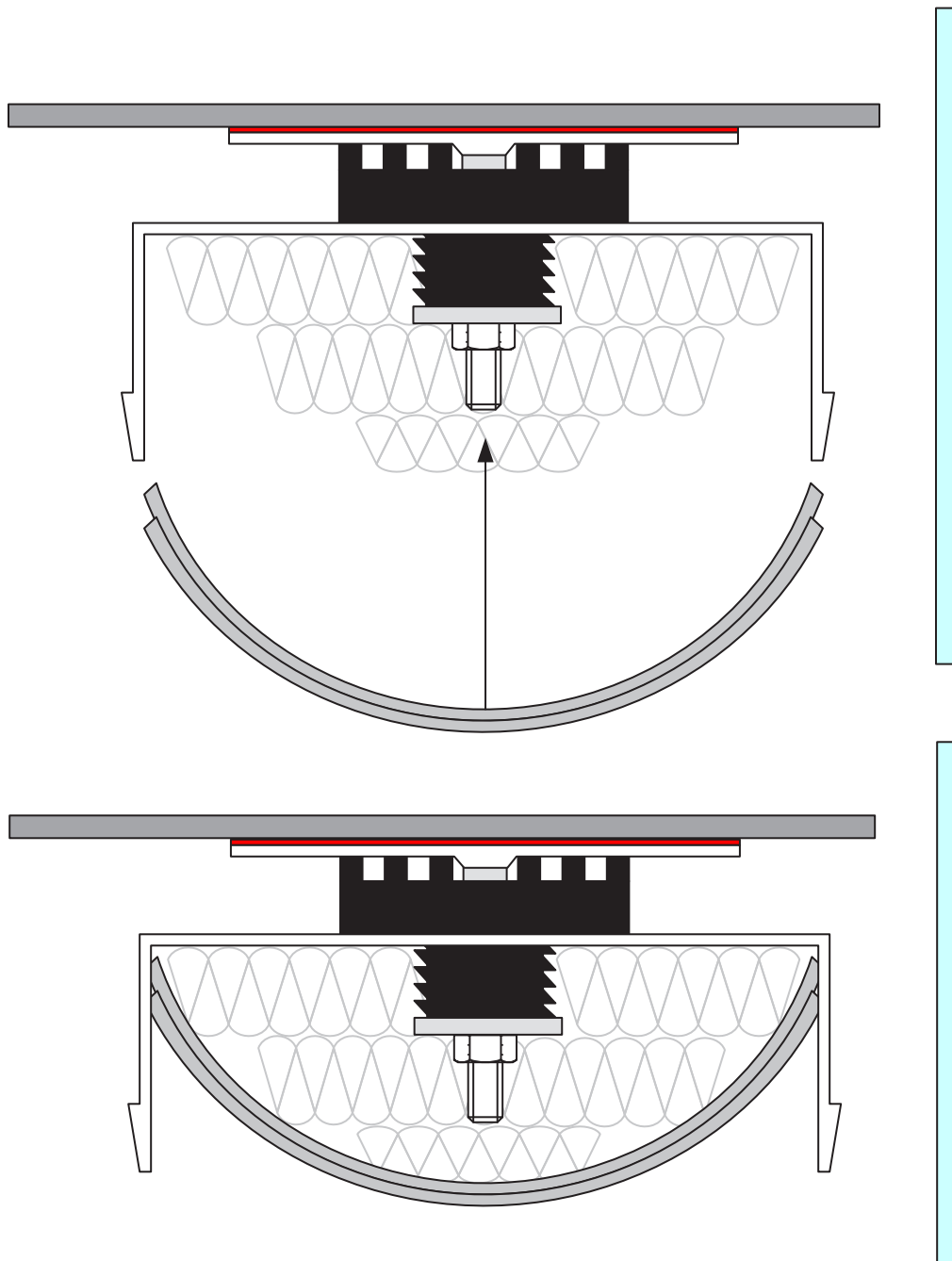
Trademark
SOUNDPROOFING

Installation Guide

RSIC-AMI Acoustical Mullion Isolator

Mount the insert insulation around the RSIC-AMI clip

Cut/Trim Mass loaded vinyl slightly larger than the mullion section and friction fit into the cavity space over the insulation. (Insulation and 2lb MLV supplied by others)





Trademark
SOUNDPROOFING

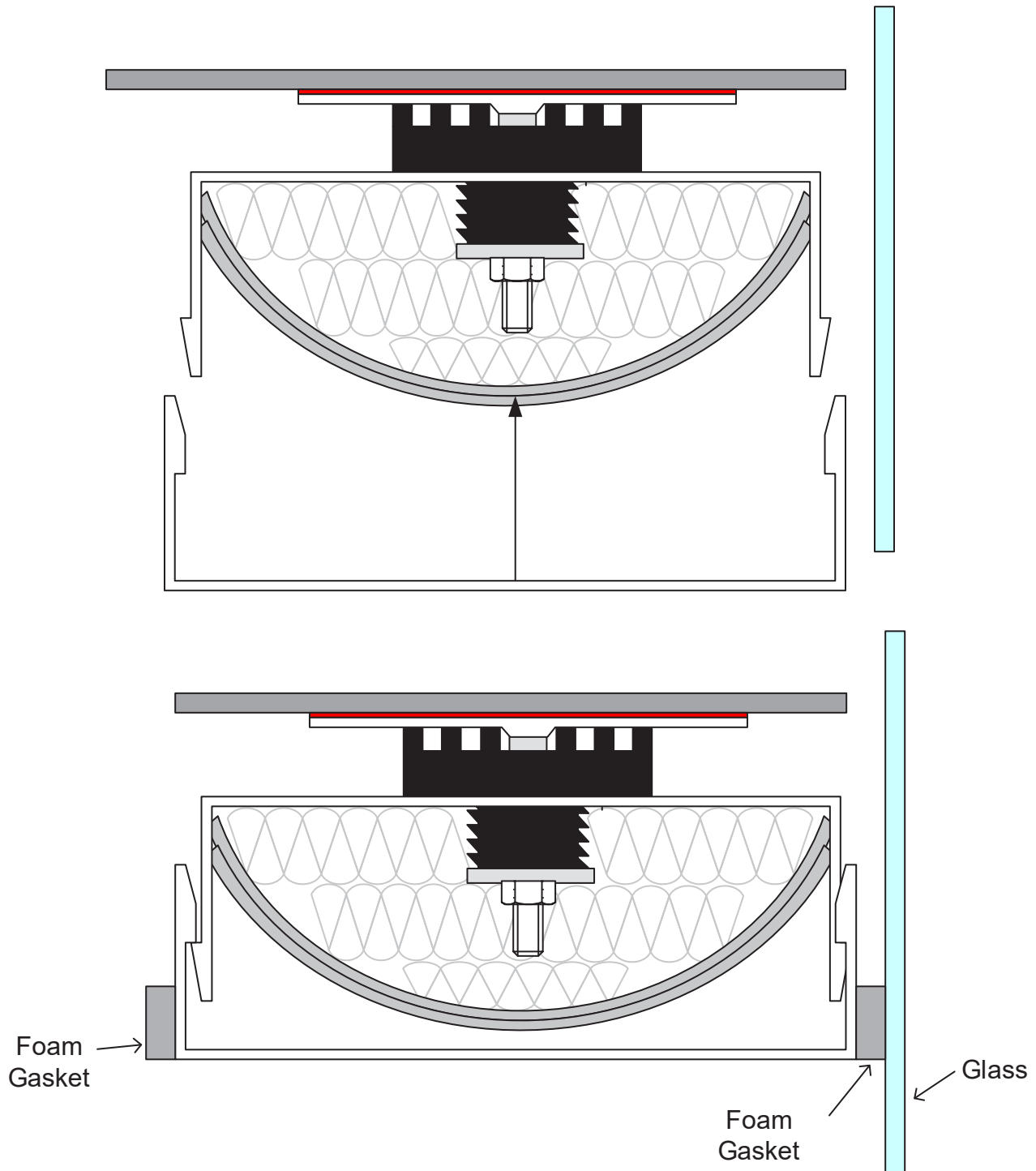
Installation Guide

RSIC-AMI Acoustical Mullion Isolator

Snap on finish trim piece, (supplied by others)

Caulk, or gasket edges at wall and window intersections. (Supplied by others)

Repeat for both sides of mullion.



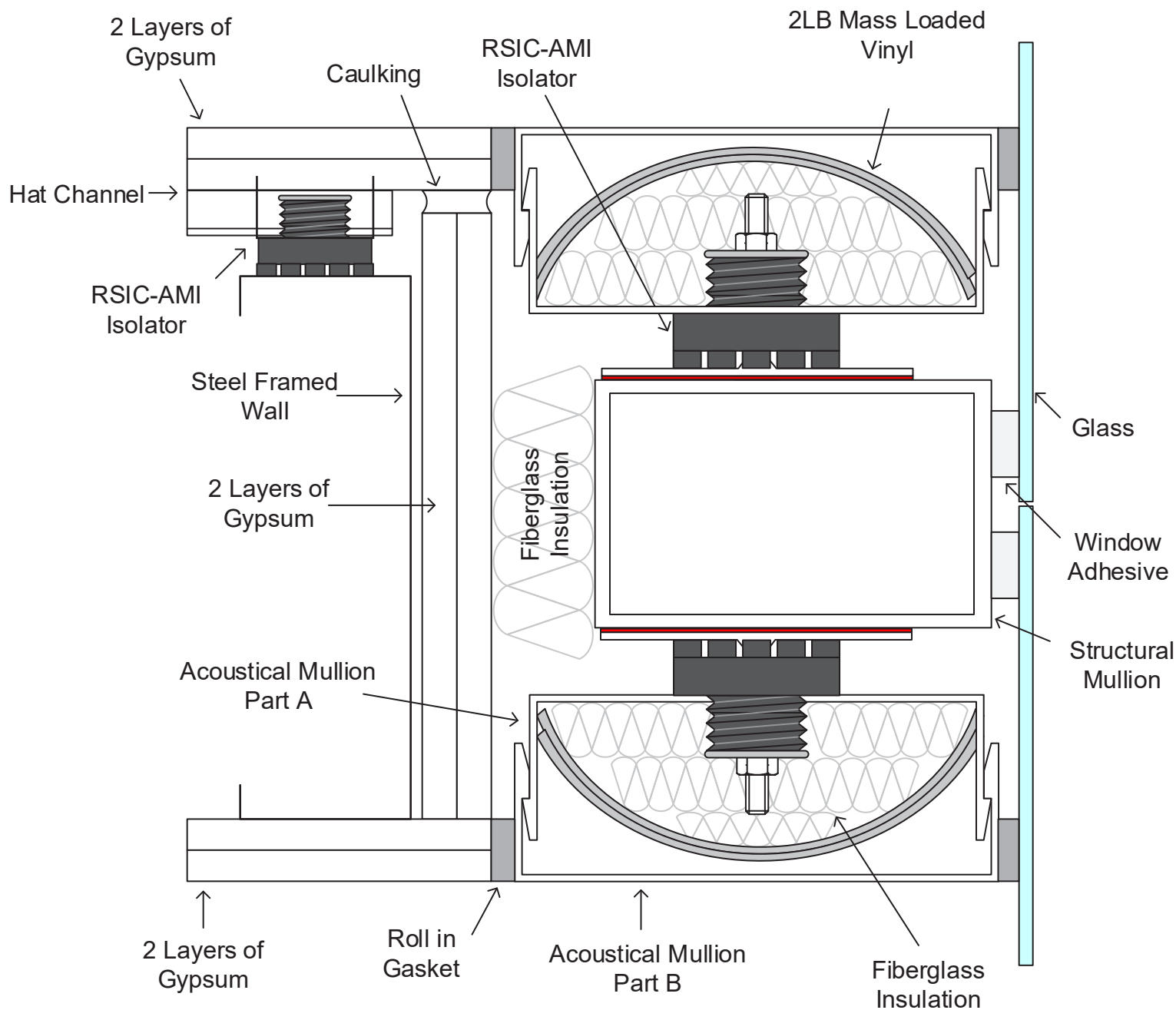


Trademark
SOUNDPROOFING

Installation Guide

RSIC-AMI Acoustical Mullion Isolator

RSIC-AMI Screw fastened to main mullion with Stainless Steel fasteners.





RSIC-AMI Acoustical Mullion Isolator

2 Layers of Gypsum

Hat Channel

Caulking

RSIC-AMI Isolator

Steel Framed Wall

2 Layers of Gypsum

Acoustical Mullion Part A

2 Layers of Gypsum

Foam Gasket

Acoustical Mullion Part B

1/4x20 Flat Head machine screw

2LB Mass Loaded Vinyl

RSIC-AMI Isolator

1/4x20 Nylock nut

3" dress washer

3m VHB Tape

Glass

Window Adhesive

Structural Mullion

Fiberglass Insulation