

Dune 3022: Acoustic, Panel

Specifications:

Contents

100% recycled polyester

Weight

11.5 +/- 0.5 oz./lin. yd.

Width

66" min. useable

Repeat

16.5" vertical, 16.4" horizontal

Treatment

None

Backing

None

Cleaning Code:

Standard Care Label W-S. Clean with water based cleaning agents, foam or pure, water free solvents. Vacuuming or light brushing is recommended to prevent dust and soil buildup.

Performance:

Breaking Strength (ASTM D5034)

250 lbf min. warp and 125 lbf min. fill

Tear (ASTM D2261)

25 lbf min. warp and 20 lbf min fill

Colorfastness to light (AATCC 16 Option 3)

Grade 4 min. at 40 hours

Colorfastness to crocking (AATCC 8)

Grade 4 min. dry & Grade 3 min. wet

Flammability

ASTM E84 Class 1 or A

NRC of anechoic termination

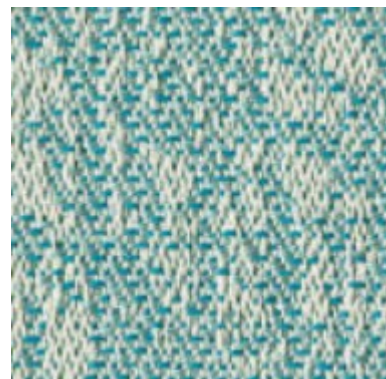
1.00

NRC of fabric in front of anechoic termination

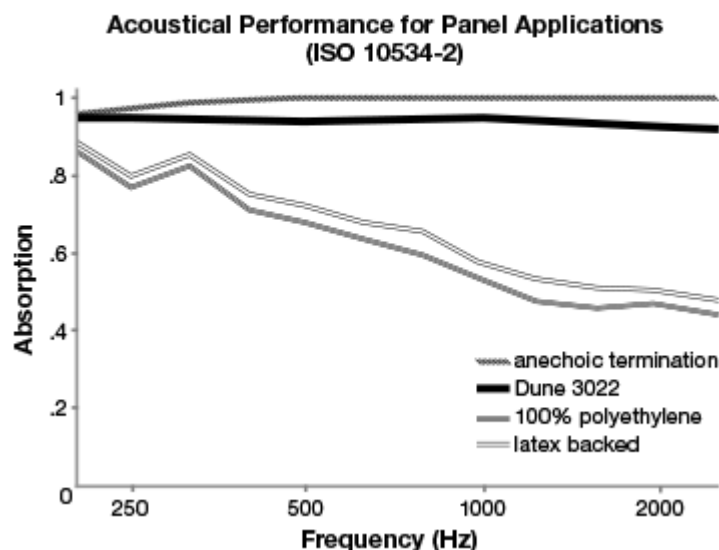
.95

Miscellaneous:

Every effort has been made to ensure color accuracy of the digital images, however, please order a sample before specification. Colors may vary between dye lots. This is a directional fabric. Proudly woven in the USA supporting our local communities. Application testing of this product is recommended.



The plot below summarizes impedance tube measurements of absorption of an anechoic termination and various fabrics in front of the anechoic termination.



Terralex is a registered trademark of True Textiles, Inc. and designates fabrics that are made from 100% recycled or compostable material using increasingly sustainable manufacturing practices to produce a high quality product that is recyclable at the end of its useful life.



CO₂ emissions from 100% of the electricity used by the manufacturer to produce this product have been measured and offset in accordance with the CarbonNeutral Protocol.



This pattern is included in the underwriters laboratory panel fabric recognition program. Additional testing of this U.L. recognized fabric is not required on approved panels from participating manufacturers.